



6" AC CENTRIFUGAL BLOWER

Part # 500-SC600-36

The 500-SC600-36 Blower is specifically designed and built for the rigors of the marine environment and not adapted from other industries.



AIRFLOWS TO 1200 CFM

Design & Construction

With a white powder coated marine grade aluminum housing that uses stainless steel fasteners, this unit provides a compact blower with excellent corrosion resistance and lightweight.

Motor

A 1.5 HP - 60 HZ High efficiency 3 phase or standard single-phase motor is utilized to provide quiet continuous duty service. Available with "CE" Classification and/or optional I-EEE-45 Certification.

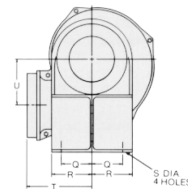
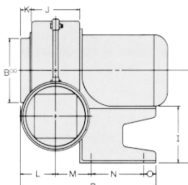
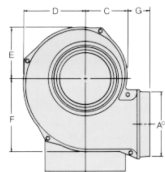
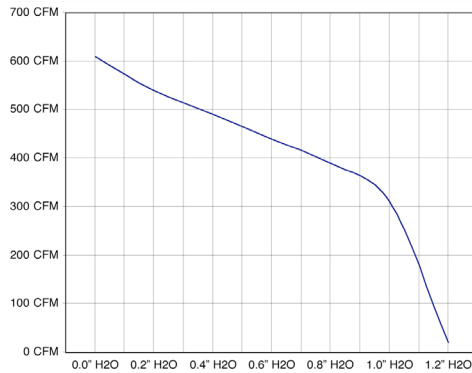
Sound Power Levels

3450 RPM @ 5 Ft. (1.5 M) 81dBa@0.0"SP, 78dBa@0.5"SP
77dBa@1.0"SP

Performance

Continuous duty rated and ignition protected with airflows to 1,200 CFM. Available I-EEE-45 Motor Certification (3 Phase Only).

PERFORMANCE AT 1750 RPM – 60 HZ MOTOR



A	B	C	D	E	F	G	H	I	J	K	L	M	N	O	P	Q	R	S	T	U
6	6	3 7/8	5 5/8	4 3/4	6 9/16	2 1/8	8 1/2	5	4 1/2	1 1/8	3 3/8	3 3/8	5	1	12 3/4	2 3/4	3 3/4	7/16	6	4 3/16